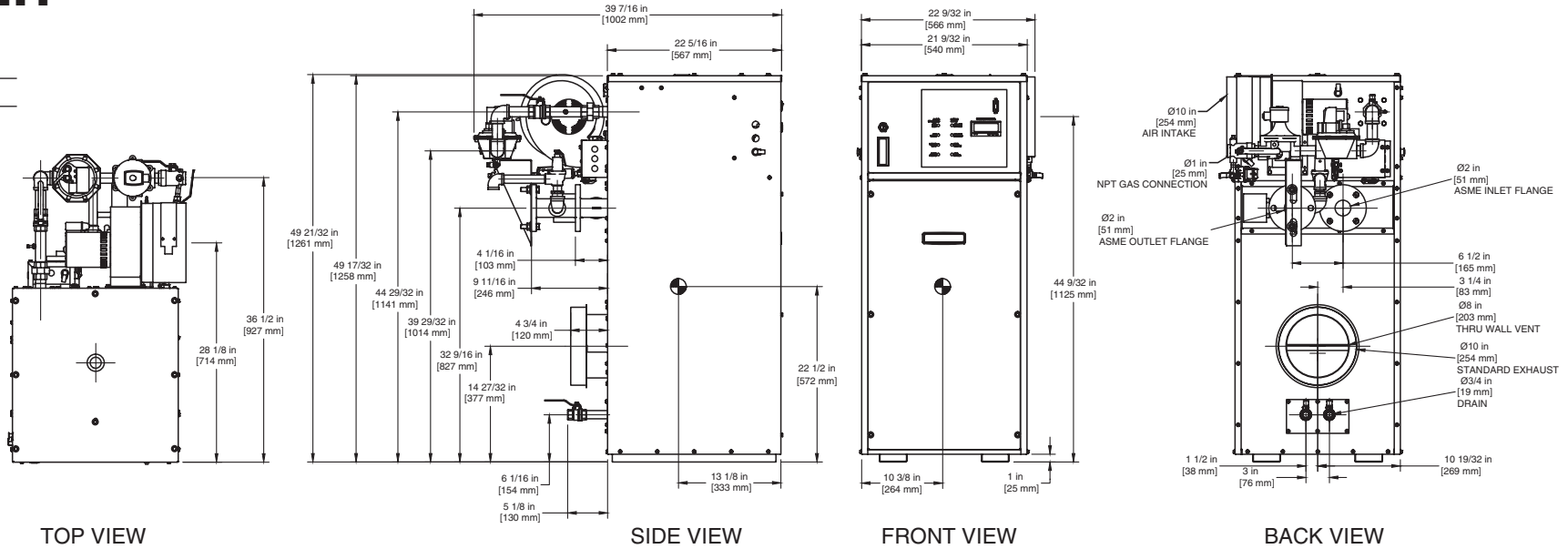


# INDOOR UNIT

RSUB-65 REV D

## CODE OPTIONS

CSD-1 Manual Reset LWCO



### Notes:

1. Dimensions are approximate and should not be used to "rough-in" equipment.
2. Dimensions are subject to change without notice.

## BOILER CERTIFIED RATINGS & CAPACITIES

<b>Fuel Type</b>	Natural/Propane Gas	<b>Boiler FLA</b>	5.3*
<b>Input BTU/hr.</b>	750,000 / 220 kW	<b>Min. Gas Pressure Required</b>	5" W.C.**
<b>Output BTU/hr.</b>	637,500 / 187 kW	<b>Max. Gas Pressure Allowed</b>	14" W.C.
<b>Electrical Requirements</b>	120 VAC / 1 ph / 60 hz	<b>Operating Weight</b>	468 lbs. / 212 kg.

## BOILER TEMPERATURE RISE / PRESSURE DROP

20°F / 11.1°C				25°F / 13.9°C				30°F / 16.7°C				35°F / 19.4°C			
Flow Rate		Pressure Drop		Flow Rate		Pressure Drop		Flow Rate		Pressure Drop		Flow Rate		Pressure Drop	
GPM	L/s	Ft	kPa	GPM	L/s	Ft	kPa	GPM	L/s	Ft	kPa	GPM	L/s	Ft	kPa
63.8	4.0	1.57	4.6	51.0	3.2	1.04	3.1	42.5	2.7	0.70	2.2	36.4	2.3	0.60	1.6

## BOILER / WATER HEATER TRIM & CONTROLS

<b>Main Gas Valve</b>	V4944B	<b>Main Ball Valve</b>	1"
<b>Firing Valve</b>	1"	<b>Pilot Regulator</b>	White-Rodgers 25M
<b>Safety Valve</b>	ASCO L8214G 1"	<b>Air Switch</b>	HUBA
<b>Ignition Control</b>	Honeywell RM7897C	<b>Blower Motor</b>	Fasco 1/4 hp - FLA 3.6
<b>Operating Control (FB/FW)</b>	Jumo	<b>Relief Valve - FB</b>	3/4" x 3/4" set @ 50 psi
<b>High Limit</b>	Honeywell L4008E	<b>Relief Valve - FW</b>	3/4" x 3/4" set @ 125 psi
		<b>Flow Switch</b>	TACO

## WATER HEATER HOURLY RECOVERY CAPACITY (GPH & LPH)

40°F	22°C	60°F	33°C	80°F	44°C	100°F	56°C	120°F	67°C	140°F	78°C
1877	7096	1252	4731	939	3548	751	2838	626	2365	536	2027

## A.S.M.E.

<b>ASME Sect IV Htg Surface</b>	97.79 Sq. Ft. / 9.08 Sq. M.	<b>Design Data</b>	Max. 160 psig & 250°F
<b>Water Volume</b>	3.7 gal / 14.0 Liters		

\* Add circulator amps.

\*\* For incoming gas pressures lower than 5" W.C. natural or 11" W.C. propane, consult factory.

REP FIRM \_\_\_\_\_  
 SUBMITTED BY \_\_\_\_\_  
 JOB NAME \_\_\_\_\_  
 ARCHITECT \_\_\_\_\_  
 ENGINEER \_\_\_\_\_  
 CONTRACTOR \_\_\_\_\_  
 DATE \_\_\_\_\_

# FUTERA II 750

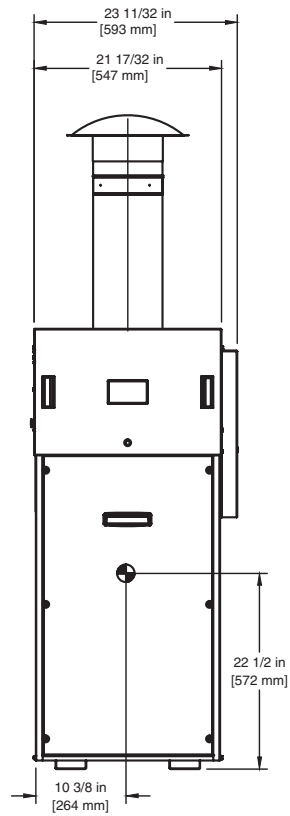
**Category I or Category III Appliance**  
 (see Installation and Operation Manual for venting information)

**RBI**®  
 RELIABLE. BOLD. INNOVATIVE.

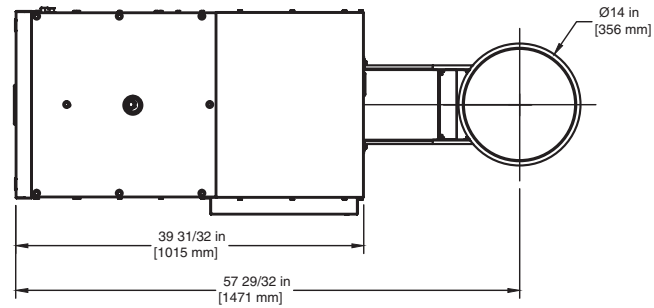
A Division of Mestek, Inc.  
 Westfield, MA 01085  
 (413) 568-9571

# OUTDOOR UNIT

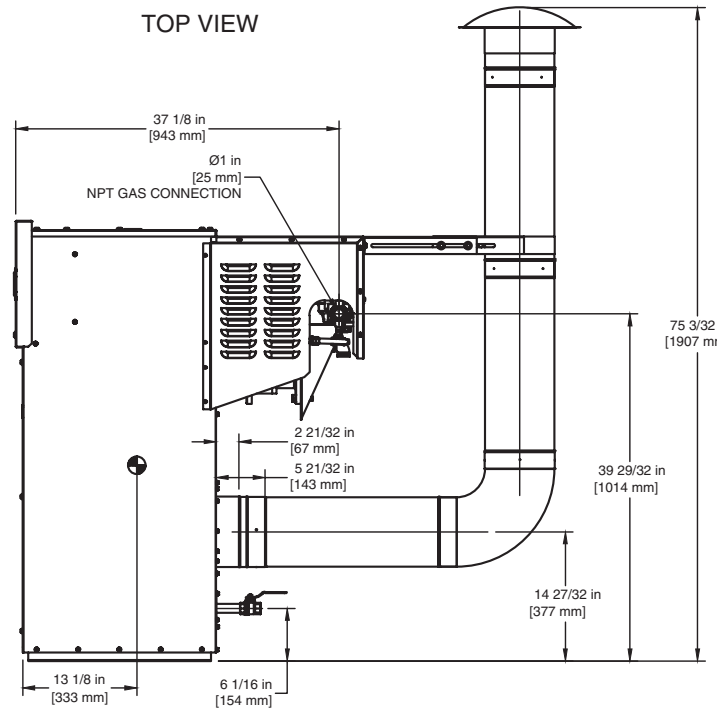
RSUB-152



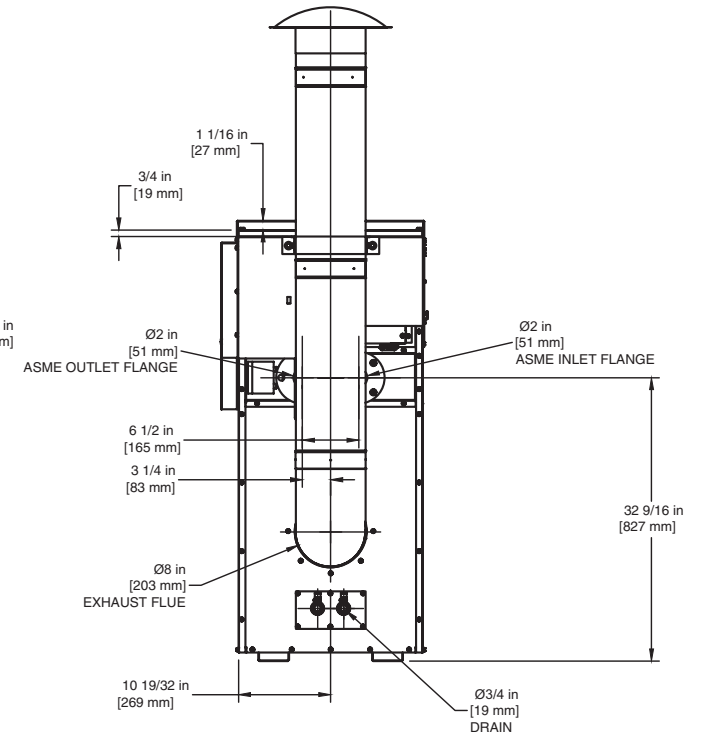
FRONT VIEW



TOP VIEW



SIDE VIEW



BACK VIEW

## FUTERA II 750

**Notes:**

1. Dimensions are approximate and should not be used to "rough-in" equipment.
2. Dimensions are subject to change without notice.